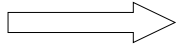




Four convenient size's to match your roof drainage and style.

FS-100



FS-75x50

FS-80

FS-65



FORM SERIES-DOWNPIPES

Overview

Complete your rainwater system with our form series range of coloured downpipes.

Features

- ✓ Easy Maintenance
- ✓ Bracket fixing options
- ✓ Colour match with your spouting
- ✓ UV resistant and tough materials
- ✓ Up to 20 year material warranty

Finish Range	Downpipe Material	Colour Choice	Bracket Material	Bracket options	Downpipe options
CG Range	MagnaFlow™	Top 15 Colours	Diecast Aluminium Magnaflow	Adjustable clamp Fixed Clip	Large range of diecast fittings
Designer Range	MagnaFlow™	34 Designer Colours	Diecast Aluminium	Adjustable clamp	Large range of diecast fittings
Copper*	Pure Copper	Natural	Brass or Copper	Adjustable clamp Fixed Clip	Hand mitred Welded options available

Available from these Continuous Group Locations:

NORTHLAND | AUCKLAND | WAIKATO | BAY OF PLENTY
 TARANAKI | GISBORNE | HAWKES BAY | MANAWATU | WELLINGTON
 NELSON | MARLBOROUGH | WEST COAST | CANTERBURY | OTAGO | SOUTHLAND



FORM SERIES-DOWNPIPES

PRODUCT SPECIFICATIONS

MagnaFlow™ Pre-painted Steel	0.55mm G300 with a minimum of 200gsm alloy/zinc coating.
Pure Copper Copper 3/4 Hard	0.55mm Grade C12200
Adjustable Clamp	Diecast aluminium or Diecast brass (Copper plated available)
Fixed Clip	MagnaFlow™ Or 0.55mm Copper Grade C12200
Maximum Bracket spacing	2400mm (It is recommended that brackets are placed within 400mm of bends, tees and drain connections)
Recommended Fixings	Minimum Class 4 screw &/or rivet fasteners compatible with substrate and bracket material.

IMPORTANT SET OUT REQUIREMENTS

All stormwater drains to be according to MRM code of practice section 5.4 and E1/AS1 section 3

Form series downpipes can be used for water collection but can NOT be used where water tank head height is higher than top of drain. Use Ezi-Flo series downpipe where charged downpipes are required

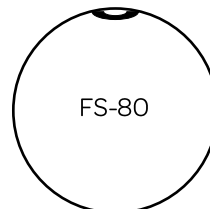
Timber fixing points for downpipe brackets should be installed when soft claddings are used (IE: Polystyrene with plaster)

Downpipe calculations for roof area, refer to MRM code of practice sections 5.4.1; 5.4.2; 5.7

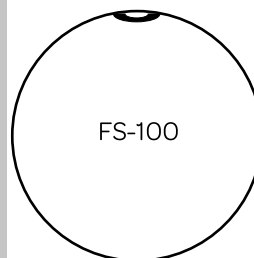
Form Series downpipes are a roll-formed lock seamed downpipe
They are not designed to withstand head pressure therefore we do not recommend, support or approve use of this type of downpipe within the building envelope or for "Charged lines"



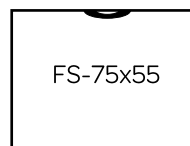
Inside Diameter	Outside Diameter	Capacity mm²
67.3mm	68.5mm	3550



Inside Diameter	Outside Diameter	Capacity mm²
80mm	81.2mm	5020

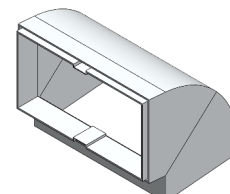
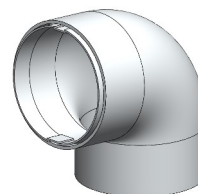


Inside Diameter	Outside Diameter	Capacity mm²
99mm	100.2mm	7690



Inside Diameter	Outside Diameter	Capacity mm²
73.8 x 52.8mm	75x54mm	3890

95° Bend fittings



[More downpipe fittings available on our website.](#)

Scope of use	Continuous Group Form Series downpipes are intended to collect and channel water that runs off a roof. It is intended that the metal downpipes be placed at the perimeter of the building (Positioned outside the building envelope).
NZBC Compliance	Test information available from Pacific Coilcoaters, New Zealand Steel and Ambro Metals, combined with past history of downpipe systems, indicate, that provided the product use and maintenance is in line with the guidelines contained in the current literature, Continuous Group Form Series downpipes can be expected to meet the performance criteria in clause E2 of the New Zealand building code.
Durability	All copper, brass and aluminium products listed above are fit for purpose in environment zone B, C, D and E* Pre-painted steel products are fit for purpose in environment Zone B and C* They may be used in environment zone D subject to a pre-approval warranty application based on site address* *In all cases, areas with high wind &/or salt &/or thermal/industrial atmospheric conditions may require specific engineering design (S.E.D) Reference: Section 4, "Durability" from NZS3604:2011.
Maintenance	Continuous Group Form Series downpipes require regular maintenance to ensure the useful life of the products. Minimum maintenance interval of every 6 months or as often as needed to avoid build up of contaminants (dirt, salt, pollen etc.) on the downpipe surface. Simply spray and rinse with water and/or if necessary scrub with a soft nylon brush. More information and specific maintenance products are available on our website www.continuous.co.nz/care-and-maintenance
Warranty	MagnaFlow™ : Environment zone B, C & D—10 year paint warranty ; 15 year perforation warranty. Pure Copper : 20 year material and perforation warranty. Full details and conditions of our comprehensive warranty can be found at www.continuous.co.nz/warranties