

**Protect** |  
Snow & Leaf Protection

**SNOWSTRAPPS**

### Overview

Snowstraps are designed to provide additional strength to rainwater systems by attaching in-between the spouting brackets and fixing to your roof.

### Features

- ✓ Double rivets into the spouting bead for additional shear loading.
- ✓ Colours to match and blend with your roof colour\*
- ✓ Can be retro-fitted.
- ✓ Designed & manufactured in New Zealand.
- ✓ Additional support for high wind zones



Finish Range	Base Material	Colour Choice	Tip Material	Snow loading	Compatible with:
CG Range	MagnaFlow™	Top 15 Colours	MagnaFlow™	Up to 2.0kpa**	All Continuous Group spouting profiles
Designer Range	MagnaFlow™	34 Designer Colours	MagnaFlow™	Up to 2.0kpa**	
Copper*	Pure Copper or MagnaFlow™	Natural	Copper	Up to 2.0kpa**	

\*Not all roof colours can be matched. For textured metal roof tiles, Snowstraps come in a flat finish ONLY.

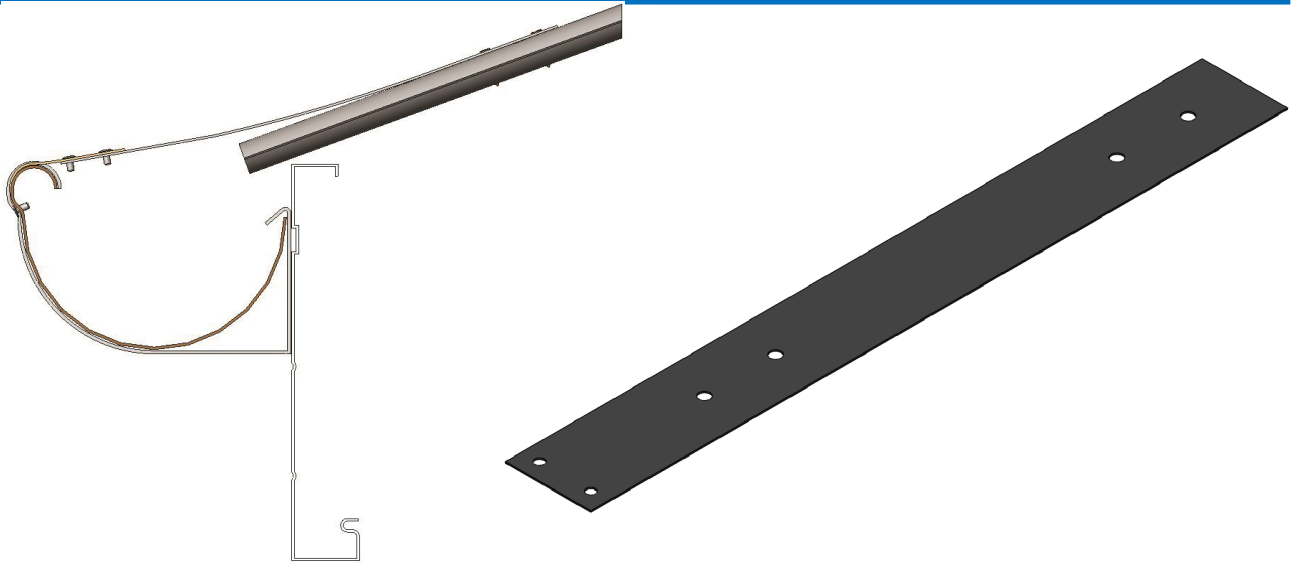
\*\* For snow loading zones and altitudes, refer to NZS 3604-Section 15 or [www.continuous.co.nz/protection](http://www.continuous.co.nz/protection)

### Available from these Continuous Group Locations:

NORTHLAND | AUCKLAND | WAIKATO | BAY OF PLENTY  
TARANAKI | GISBORNE | HAWKES BAY | MANAWATU | WELLINGTON  
NELSON | MARLBOROUGH | WEST COAST | CANTERBURY | OTAGO | SOUTHLAND



## SNOWSTRAPPS



PRODUCT SPECIFICATIONS		SNOW LOADING ZONES	Max altitude @ 2.0 kPa
<b>MagnaFlow™</b> Pre-painted Steel	0.55mm G300 with a minimum of 200gsm alloy/zinc coating.	Zone 1– Gisborne/South of Taupo/ South of New Plymouth	850
<b>Pure Copper</b> Copper 3/4 Hard	0.55mm Grade C12200	Zone 2–Buller & Westland	850
Tip Material (when attaching to copper)	0.55mm Copper Grade C12200	Zone 3–Nelson/Marlborough	850
Recommended Maximum spacing	Centred between spouting brackets or at a maximum of 600mm	Zone 4–Canterbury/Central Otago / Otago, North of Waitati	350
Recommended Fixings	Minimum Class 4 screw fasteners compatible with substrate and bracket material.	Zone 5–Southland/ Otago, south of Waitati	400

<b>Scope of use</b>	Continuous Group snow solutions are intended to provide additional fixings to <u>assist</u> gutters from collapse in light to medium snow falls. Rare snow falls or “Marine” snow falls may exceed the maximum 2 KPa limit detailed in NZS 3604 and may require specific design.
<b>NZBC Compliance</b>	New Zealand is divided (in NZS3604) into six zones where the maximum snow load is 2 kPa. Any areas above specific altitudes in these areas require specific design. Projections such as gutters, flashings and chimneys need additional fixings and detailing to resist loads from sliding snow. Continuous Group Snow straps are solely an additional fixing as described in MRM –COP section 3.8
<b>Durability</b>	All copper and aluminium products listed above are fit for purpose in environment zone B, C, D and E* Pre-painted steel products are fit for purpose in environment Zone B and C* They may be used in environment zone D subject to a pre-approval warranty application based on site address* *In all cases, areas with high wind &/or salt &/or thermal/industrial atmospheric conditions may require specific engineering design (S.E.D) Reference: Section 4, “Durability” from NZS3604:2011.
<b>Maintenance</b>	Continuous Group snow solutions require regular maintenance to ensure the useful life of the products. Minimum maintenance interval of every 6 months <u>or</u> as often as needed to avoid build up of contaminants (dirt, salt, pollen etc.) on the product surface. Simply spray and rinse with water and/or if necessary scrub with a soft nylon brush. More information and specific maintenance products are available on our website <a href="http://www.continuous.co.nz/care-and-maintenance">www.continuous.co.nz/care-and-maintenance</a>
<b>Warranty</b>	<b>MagnaFlow™</b> : Environment zone B & C—10 year paint warranty ; 12 year perforation warranty. <b>MagnaFlow™</b> : Environment zone D—10 year paint warranty ; 10 year perforation warranty. <b>Pure Copper</b> : 20 year material and perforation warranty. Full details and conditions of our comprehensive warranty can be found at <a href="http://www.continuous.co.nz/warranties">www.continuous.co.nz/warranties</a>